

Short Communication

pISSN 2466-1384 · eISSN 2466-1392
Korean J Vet Res 2021;61(1):e4
<https://doi.org/10.14405/kjvr.2021.61.e4>

*Corresponding author:

Yun Sang Cho
Parasitic and Honeybee Disease
Laboratory, Bacterial and Parasitic
Disease Division, Department of Animal
and Plant Health Research, Animal and
Plant Quarantine Agency, 177 Hyeoksin
8-ro, Gimcheon 39660, Korea
Tel: +82-54-912-0743
Fax: +82-54-912-0759
E-mail: choys@korea.kr

ORCID:
<https://orcid.org/0000-0003-1346-7067>

Conflict of interest:
The authors declare no conflict of interest.

Received: November 12, 2020

Revised: February 17, 2021

Accepted: March 02, 2021



© 2021 The Korean Society of Veterinary Science.

© This is an open-access article distributed under the terms of the Creative Commons Attribution Non-Commercial license (<http://creativecommons.org/licenses/by-nc/4.0/>), which permits unrestricted non-commercial use, distribution, and reproduction in any medium, provided the original work is properly cited.

Molecular and serological surveillance of equine piroplasmosis in the Republic of Korea between 2016 and 2017

Hyun-Ji Seo¹, Keun-Ho Kim¹, Sang Kyu Lee², Subin Min¹, Ji-Yeon Lim¹, Sun-Joo Yang², Mi-Sun Yoo¹, Sukchan Jung¹, Soon-Seek Yoon¹, Yun Sang Cho^{1,*}

¹Parasitic and Honeybee Disease Laboratory, Bacterial and Parasitic Division, Department of Animal and Plant Health Research, Animal and Plant Quarantine Agency, Gimcheon 39660, Korea

²Korea Racing Authority, Gwacheon 13822, Korea

Equine piroplasmosis (EP) is caused by *Babesia caballi* and *Theileria equi* infection. We investigated antigen and antibody of EP in horses in the Republic of Korea during 2016-2017. Antigen and antibody of *T. equi* was detected 0.06% (1/1,650). Phylogenetic analysis of 18S rRNA revealed that the *T. equi* was highly homologous with the strains from China, Mongolia, and Spain. Two *Theileria* spp. were also detected and highly homologous with *T. buffeli*, *T. luwenshuni*, and *T. orientalis*.

Keywords: tick-borne disease; horse diseases; equine piroplasmosis; *Theileria equi*; 18S ribosomal RNA

Equine piroplasmosis (EP) is a tick-borne protozoal disease in which horses, mules, donkeys, and zebras are infected with the hemoprotozoan parasites, *Babesia caballi* or *Theileria equi* from blood-sucking ticks [1,2]. EP causes serious economic damages, showing hemolytic anemia and associated systemic illness [1]. Furthermore, EP has been an obstacle to international trade as the disease designated by World Organization for Animal Health [3-5]. EP is an endemic disease prevalent in the tropical and subtropical regions and in some temperate regions [1,2]. It has predominantly been reported in Asia, South and Central America, Africa, Southern Europe, and some parts of southern USA [1,2].

EP antigen diagnosis is performed by microscopic examination and polymerase chain reaction (PCR), and the antibody diagnosis is performed by indirect fluorescent antibody test, competitive enzyme-linked immunosorbent assay (cELISA), and complement fixation test [1]. Because of the reliability of the test and the convenience of mass testing, antigen diagnosis by PCR and antibody diagnosis by cELISA are mainly used [2]. EP in the Republic of Korea (ROK) was 0.9% *T. equi*-positivity from three provinces during 2007-2010 [3,4]. Climate change is having a significant impact on the increase in ticks and tick-borne diseases [2]. There is a need to investigate changes in the infection status of EP according to Korean Peninsula warming. In this study, we monitored the EP infectious status in ROK during 2016-2017, using PCR for antigen detection and cELISA for antibody detection. Subsequently, phylogenetic analysis was used to compare the genetic relationships.

Horse blood and serum samples were collected as a part of the health manage-

ment program by Korean Racing Authority. This article does not have any studies with human participants or animals done by any authors. We surveyed EP antigen and antibody in blood and serum samples collected from 1,650 horses at 222 horse ranches in 6 metropolitan cities and 9 provinces in ROK (Table 1). The collected samples were stored at 4°C until used. Blood samples were tested for antigens of *B. caballi* and *T. equi* using PCR. DNA was extracted from the blood samples using a Maxwell RSC Whole Blood DNA kit (Promega, USA). DNA was eluted in 50 µL volumes of elution buffer and stored at -70°C until used. The PCR reactions included 2 µL of extracted DNA and 10 pmol of specific primer sets (Table 1) [6], and run on a C1000 Touch™ Thermal Cycler (Bio-Rad, USA) (95°C for 10 minutes followed by 35 cycles at 95°C for 1 minute, 60°C for 1 minute, and 72°C for 1 minute; and finally 72°C for 5 minutes). PCR-positive samples were sequenced using Macrogen sequencing service (ROK). Nucleotide sequence homology searches were analyzed by the National Center for Biotechnology Information (NCBI) BLAST network service and aligned using the MegAlign software package (Windows version 7.1; DNA-STAR, USA). Phylogenetic trees were generated using neighbor-joining algorithms and the Jukes and Cantor matrix. Support for topology was calculated using 1,000 bootstrap replications. Serum samples were tested for anti-*B. caballi* and anti-*T. equi* antibodies by cELISA using *B. caballi* and *T. equi* antibody test kits (VMRD, USA), respectively. cELISA tests were performed according to the manufacturer's instructions. Briefly, 50 µL of serum samples and controls were loaded into the antigen-coated plate. After incubation, 50 µL of primary antibody was added to each well. And 50 µL of secondary antibody-peroxidase conjugate was added to each well. Finally, substrate solution and stop solution was consecutively added to each well and the ELISA plates were read on its optical density. Calculation of the percent inhibition (%I) was as follows: %I (Inhibition rate) = 100 [1 - (sample optical density [OD]/negative control OD)].

The ELISA positive serum (n = 1) was collected at a total of three times including after 4 months and 1 year later. Ticks were collected from the *T. equi*-positive horse ranch surrounding. Tick drag (BioQuip Products Inc.; USA) was used to collect ticks. Ticks were removed from drags, and transported to

the laboratory where they were stored at -20°C until identification by microscopic morphology on a cold table using standard keys [7].

During 2016-2017 in ROK, one of 1,650 horses (0.06%) was confirmed *T. equi* antigen and antibody (Table 2). In addition, *Theileria* spp. was found in 2 of the 1,650 horses (0.12%), which showed seronegative for *T. equi* and *B. caballi* antibody test. We collected a total of 62 ticks in *T. equi*-positive horse ranch, which were 52 ticks (2 nymphs and 50 larvae) in 2016 and 10 ticks (10 larvae) in 2017. All of them were *Haemaphysalis longicornis*, in which EP pathogens were not detected.

The antibody titer of *T. equi*-positive horse at the first test was 54.63 %I. The second and third test of it were performed at 4 months and 1 year later, in which *T. equi*-antibody titers were showed 56.79 %I and 67.33 %I, respectively. At that time, we have also tested for 5 co-breeding horses with *T. equi*-positive horse in Ulsan at the same time to bleed *T. equi*-positive horse. No antibodies of *T. equi* or *B. caballi* were found in the other 5 co-breeding horses.

Three of 1,650 horses (0.18%) were *Babesia/Theileria* duplex PCR-positive, which were from Ulsan, Gyeonggi-do, and Gyeongsangbuk-do, respectively (Tables 1 and 2). Of them, *T. equi* PCR-positive sample (17H107) was from Ulsan, in which *T. equi* antibody was also detected (Table 2, Fig. 1A). The 18S rRNA gene from 17H107 exhibited the highest genetic homology with two strains in ROK (HM229407, HM229408) (Fig. 1A). Compared with those of other countries, 17H107 showed highly homologous with the strains in Chinese (KF559357) and Spanish (AY534882) horse blood and the strain in Mongolian horse ticks (JQ657703) (Fig. 1A).

Two *Theileria* spp., 1st_427 and 2nd_128, were also detected (Fig. 1B). The *Theileria* spp. were similar to *T. buffeli* derived from cattle and *T. luwenshuni* derived from deer in ROK. And, those were highly homologous with *T. luwenshuni*, *T. orientalis*, and *T. sinensis* from China and *T. annulata* from India (Fig. 1B). However, two horses confirmed with *Theileria* spp. showed no clinical signs.

T. equi was found in one horse in Ulsan (35°32'60"N, 129°18'60"E) in ROK during 2016-2017 at national level surveillance (Table 2). Previously, three province surveillance of EP pathogens in Korea had been performed during 2007-2010

Table 1. PCR primer sets for the detection of equine piroplasmosis

Primers	Sequences (5'-3')	Products size (bp)	Target gene	Reference
Bec-UF1	GTTGATCCTGCCAGTAGTCA	<i>Babesia caballi</i> : 867	18S ribosomal	[6]
Bec-UR	CGGTATCTGATCGTCTTCGA	<i>Theileria equi</i> : 913	RNA gene	

PCR, polymerase chain reaction.

Table 2. Polymerase chain reaction and competitive enzyme-linked immunosorbent assay for equine piroplasmosis in the Republic of Korea between 2016 and 2017

Regions	No. of farms	No. of horses	No. of Ag positive by PCR			No. of Ab positive by cELISA	
			<i>Babesia</i> spp. or <i>Theileria</i> spp.	<i>B. caballi</i>	<i>T. equi</i>	<i>B. caballi</i>	<i>T. equi</i>
Seoul	2	28	-	-	-	-	-
Incheon	2	14	-	-	-	-	-
Daegu	2	10	-	-	-	-	-
Daejeon	2	12	-	-	-	-	-
Ulsan	4	16	1	-	1	-	1
Gwangju	5	24	-	-	-	-	-
Gyeonggi-do	24	378	1	-	-	-	-
Kangwon-do	7	96	-	-	-	-	-
Chungbuk-do	7	55	-	-	-	-	-
Chungnam-do	8	65	-	-	-	-	-
Gyeongbuk-do	21	114	1	-	-	-	-
Gyeongnam-do	12	57	-	-	-	-	-
Jeonbuk-do	13	62	-	-	-	-	-
Jeonnam-do	8	55	-	-	-	-	-
Jeju-do	102	661	-	-	-	-	-
Others	3	3	-	-	-	-	-
Total (n, %)	222	1,650 (100.00)	3 (0.18)	0 (0.00)	1 (0.06)	0 (0.00)	1 (0.06)

Ag, antigen; PCR, polymerase chain reaction; Ab, antibody; cELISA, competitive enzyme-linked immunosorbent assay.

[3]. In this study, *T. equi* was detected in Ulsan, while *T. equi* was found in Gyeonggi-do during 2007-2010 in the previous study (Table 2). The positive regions between two studies was not related epidemiologically each other. There are 15 tick species that transmit *B. caballi*—7 *Dermacentor* spp., 6 *Hyalomma* spp., and 2 *Rhipicephalus* spp. [1]. And there are 14 *T. equi*-transmissible tick species, which are 4 *Dermacentor* spp., 4 *Hyalomma* spp., 5 *Rhipicephalus* spp., and *Amblyomma cajennense* [1]. To date, above EP-transmissible tick species have not been found in horses and horse ranches in ROK [8,9]. The collected ticks around the *T. equi*-positive horse ranch in this study were *H. longicornis*, and no EP pathogens were detected in the ticks. In 2017, the positive rate (0.06%) of *T. equi* was decreased, compared with that (0.9%) in 2010. This result might be due to absence of the transmissible tick species of EP pathogens in ROK and no transport of *T. equi*-positive horses. However, the artificial infection experiments have reported that the propagation of *T. equi* by *H. longicornis* is possible [10]. Therefore, it is needed consecutively to examine EP pathogens in horse ticks.

In other countries, seroprevalences of *T. equi* in horses were from 78.8% to 0.0% depending on its infection and sanitation status. Sudan has the highest seroprevalence at 78.8%, followed by Mongolia (72.8%), Brazil (34.8%), China (3.8%), and Japan (0.0%) [11-15]. However, no *T. equi* antibody-positive cases were found in Japan [12]. The seroprevalence (0.06%) of *T. equi*

in ROK was almost “EP-free” status. Even though *B. caballi*-positive horse was not found until now in Korea, the seroprevalence of *B. caballi* was also different from each country. The seroprevalence of *B. caballi* was the highest in Mongolia at 40.1%, followed by Brazil (27.2%), China (20.1%), Japan (7%), and Sudan (5.1%) [11-14]. To sustain “EP-free” status in ROK, thorough border quarantine inspection should be conducted continuously and the monitoring of EP for domesticated horses should be performed consecutively.

T. equi from a horse in Ulsan (17H107) exhibited the highest genetic homology with two *T. equi* in ROK (HM229407, HM229408) through phylogenetic analysis of 18S rRNA gene (Fig. 1A). Therefore, *T. equi* in this study was confirmed to be the same genotype as the previously detected Korean strain (Fig. 1A). Internationally, 17H107 showed highly homologous with the strains in Chinese (KF559357) and Spanish (AY534882) horse blood and the strain in Mongolian horse ticks (JQ657703) (Fig. 1A). In USA, EP was confirmed in horses imported illegally from Mexico in 2008 [2], indicating the importance of EP prevention by thorough border quarantine. It is important to quarantine animals at national border for sustaining national-free status.

Two *Theileria* spp. was detected in 2 horses (Fig. 1B), which showed the genetic similarity with 4 *Theileria* spp., such as *T. buffeli*, *T. luwenshuni*, *T. orientalis*, *T. sinensis*, and *T. annulate*

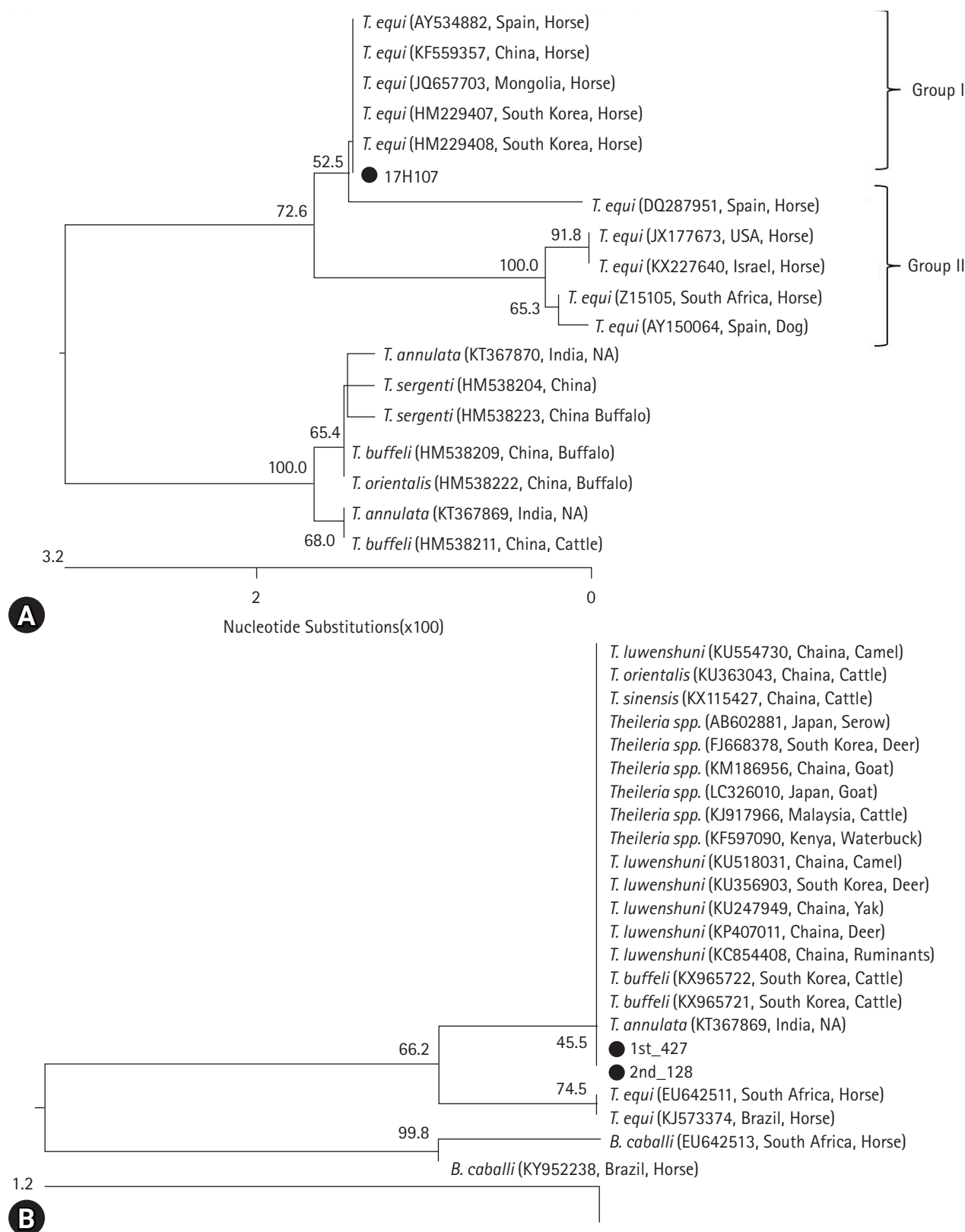


Fig. 1. Phylogenetic relationship of *Theileria equi* and *Theileria* spp. from horses in the Republic of Korea. The 18S rRNA region sequences of *T. equi* and *Theileria* spp. in this study, 17H107 from Ulsan, 1st_427 from Gyeonggi-do, and 2nd_128 from Gyeongsangbuk-do, were evaluated for their evolutionary relationships with the known sequences of *Theileria equi* (A) and *Theileria* spp. (B). *T. equi* strains were classified two groups, which were Group I from Korea, China, Mongolia, and Spain, and Group II from USA, Israel, Spain, and South Africa (A).

(Fig. 1B). However, those have never been observed to infect horses in any previous report. While *T. luwenshuni* and *T. orientalis* have been reported in infected water deer and cattle in the ROK, respectively [16,17], there are no reports of *T. sinensis* and *T. annulata* among 4 *Theileria* spp. in ROK. Additionally, two horses confirmed with *Theileria* spp. showed no clinical signs. Thus, two *Theileria* spp. might be non-pathogenic.

In conclusion, EP by *T. equi* was found in ROK during 2016-2017, showing 0.06% *T. equi*-positivity. It is still low prevalence, compared with that of during 2007-2010. Furthermore, there was no *T. equi*-transmissible tick species in surrounding of *T. equi*-positive ranch. However, the predominant tick species in horse, *H. longicornis*, can transmit *T. equi* experimentally. Therefore, the monitoring of EP pathogens in horses and ticks will be useful for accomplishing EP-free status in ROK.

Acknowledgements

This study was funded by the Animal and Plant Quarantine Agency (APQA), Republic of Korea (Grant no. B-1543081-2020-22-03).

ORCID

Hyun-Ji Seo, <https://orcid.org/0000-0003-0603-3180>
 Keun-Ho Kim, <https://orcid.org/0000-0001-6126-8818>
 Sang Kyu Lee, <https://orcid.org/0000-0002-8117-914X>
 Subin Min, <https://orcid.org/0000-0002-5704-0551>
 Ji-Yeon Lim, <https://orcid.org/0000-0003-2667-1673>
 Sun-Joo Yang, <https://orcid.org/0000-0002-4065-7889>
 Mi-Sun Yoo, <https://orcid.org/0000-0002-3176-579X>
 Sukchan Jung, <https://orcid.org/0000-0002-7801-8660>
 Soon-Seek Yoon, <https://orcid.org/0000-0003-0908-8785>
 Yun Sang Cho, <https://orcid.org/0000-0003-1346-7067>

References

1. Wise LN, Kappmeyer LS, Mealey RH, Knowles DP. Review of equine piroplasmosis. *J Vet Intern Med* 2013;27:1334-1346.
2. Onyiche TE, Sukanuma K, Igarashi I, Yokoyama N, Xuan X, Thekisoe O. A review on equine piroplasmosis: epidemiology, vector ecology, risk factors, host immunity, diagnosis and control. *Int J Environ Res Public Health* 2019;16:1736.
3. Seo MG, Yun SH, Choi SK, Cho GJ, Park YS, Cho KH, Kwon OD, Kwak D. Molecular and phylogenetic analysis of equine piroplasms in the Republic of Korea. *Res Vet Sci* 2013;94:579-583.
4. Seo MG, Yun SH, Choi SK, Cho GJ, Park YS, Kwon OD, Cho KH, Kim TH, Jeong KS, Park SJ, Kwon YS, Kwak D. Seroprevalence of equine piroplasms in the Republic of Korea. *Vet Parasitol* 2011;179:224-226.
5. Short MA, Clark CK, Harvey JW, Wenzlow N, Hawkins IK, Allred DR, Knowles DP, Corn JL, Grause JF, Hennager SG, Kitchen DL, Traub-Dargatz JL. Outbreak of equine piroplasmosis in Florida. *J Am Vet Med Assoc* 2012;240:588-595.
6. Alhassan A, Pumidonming W, Okamura M, Hirata H, Battsetseg B, Fujisaki K, Yokoyama N, Igarashi I. Development of a single-round and multiplex PCR method for the simultaneous detection of *Babesia caballi* and *Babesia equi* in horse blood. *Vet Parasitol* 2005;129:43-49.
7. Yamaguti N, Tipton VJ, Keegan HL, Toshioka S. Ticks of Japan, Korea, and the Ryukyu islands. Brigham Young University Science Bulletin, Biological Series. Brigham Young University, Provo (UT), 1971.
8. Alhassan A, Pumionming W, Okamura M, Hirata H, Battsetseg B, Fujisaki K, Yokoyama N, Igarashi I. Development of a single-round and multiplex PCR method for the simultaneous detection of *Babesia caballi* and *Babesia equi* in horse blood. *Vet Parasitol* 2016;11:e0165784.
9. Yun SM, Lee WG, Ryou J, Yang SC, Park SW, Roh JY, Lee YJ, Park C, Han MG. Severe fever with thrombocytopenia syndrome virus in ticks collected from humans, South Korea, 2013. *Emerg Infect Dis* 2014;20:1358-1361.
10. Ikadai H, Sasaki M, Ishida H, Matsuu A, Igarashi I, Fujisaki K, Oyamada T. Molecular evidence of *Babesia equi* transmission in *Haemaphysalis longicornis*. *Am J Trop Med Hyg* 2007;76:694-697.
11. Boldbaatar D, Xuan X, Battsetseg B, Igarashi I, Battur B, Batsukh Z, Bayambaa B, Fujisaki K. Epidemiological study of equine piroplasmosis in Mongolia. *Vet Parasitol* 2005;127:29-32.
12. Elata A, Mossaad E, Satti R, Matar N, Ohari Y, Xuan X, Inoue N, Sukanuma K. Serological and molecular detection of selected hemoprotozoan parasites in donkeys in West Omdurman, Khartoum State, Sudan. *J Vet Med Sci* 2020;82:286-293.
13. Li J, Li Y, Moumouni PFA, Lee SH, Galon EM, Tumwebaze MA, Yang H, Liu M, Guo H, Gao Y, Benedicto B, Zhang W, Fan X, Chahan B, Xuan X. First description of *Coxiella burnetii* and *Rickettsia* spp. infection and molecular detection of piroplasma co-infecting horses in Xinjiang Uygur Autonomous Region, China. *Parasitol Int* 2020;76:102028.
14. Xuan X, Chahan B, Huang X, Yokoyama N, Makala LH, Igarashi I, Fujisaki K, Maruyama S, Sakai T, Mikami T. Diagnosis of equine piroplasmosis in Xinjiang province of China by the

- enzyme-linked immunosorbent assays using recombinant antigens. *Vet Parasitol* 2002;108:179-182.
15. Huang X, Xuan X, Yokoyama N, Katayama Y, Anzai T, Igarashi I. Evaluation of enzyme-linked immunosorbent assays with recombinant antigens for the serodiagnosis of equine *Babesia* infections. *Vet Parasitol* 2006;140:158-161.
 16. Han YJ, Park J, Lee YS, Chae JS, Yu DH, Park BK, Kim HC, Choi KS. Molecular identification of selected tick-borne pathogens in wild deer and raccoon dogs from the Republic of Korea. *Vet Parasitol Reg Stud Reports* 2017;7:25-31.
 17. Park J, Chae JB, Kim S, Yu DH, Kim HC, Park BK, Chae JS, Choi KS. Evaluation of the efficacy of ivermectin against *Theileria orientalis* infection in grazing cattle. *BMC Vet Res* 2019; 15:297.